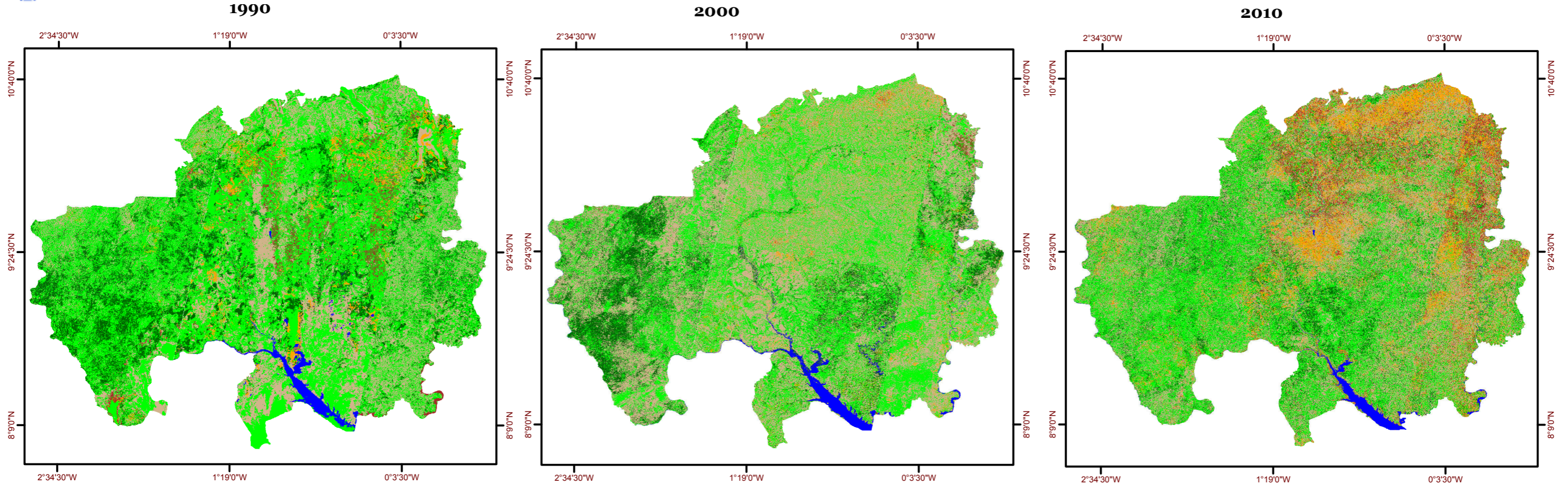


SATELLITE IMAGE MAP OF ENVIRONMENTAL IMPACT, NORTHERN REGION, 1990 - 2010

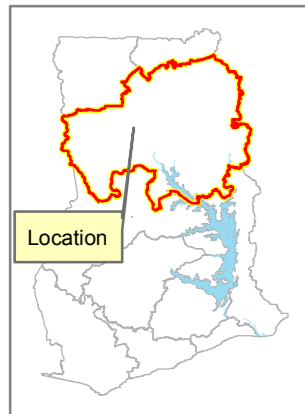


Class	Ha	Sq Km
Closed savanna wood/very dense herbaceous cover	977395	9773.95
Open savanna woodland dense herbaceous cover	3816702	38167.02
Dense herbaceous/grass cover	1672253	16722.53
Grass/herbaceous cover	252485.1	2524.851
Bare surface/built up	160629	1606.29
Water body	89316.5	893.165







Class	Ha	Sq Km
Closed savanna wood/very dense herbaceous cover	753161.8	7531.618
Open savanna woodland dense herbaceous cover	3572137	35721.37
Dense herbaceous/grass cover	2147607	21476.07
Grass/herbaceous cover	258959.52	2589.595
Bare surface/built up	151084.07	1510.841
Water body	85831.1	858.311

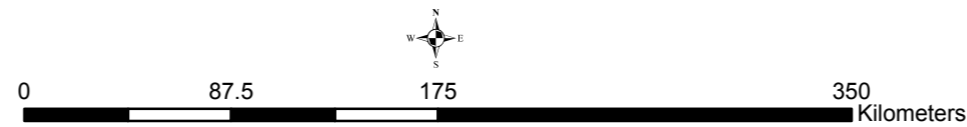
Class	Ha	Sq Km
Closed savanna wood/very dense herbaceous cover	716261	7162.61
Open savanna woodland dense herbaceous cover	2408350	24083.5
Dense herbaceous/grass cover	2413970	24139.7
Grass/herbaceous cover	861250	8612.5
Bare surface/built up	485831	4858.31
Water body	83119.2	831.192

Location Map



Legend

-  Closed savanna woodland/very dense herbaceous cover
-  Open savanna woodland dense herbaceous cover
-  Dense herbaceous/grass cover
-  Grass / herbaceous cover
-  Bare surface/ built up
-  Water body



Matrix

Project Area in the Northern Region matrix of land cover by class values for the years 1990, 2000 and 2010						
Class value	Area of project area in sq.km occupied by a class					
	1990	%	2000	%	2010	%
Closed savanna woodland	9773.95	14.03	7531.62	10.81	7162.61	10.28
Open savanna woodland	38167.02	54.77	35921.37	51.55	24083.50	34.56
Dense herbaceous/grass	16722.53	24.00	21476.07	30.82	24139.70	34.64
Grass/herbaceous	2524.85	3.62	2589.60	3.72	8612.50	12.36
Bare surface/built up	1606.29	2.30	1310.84	1.88	4858.31	6.97
Water body	893.17	1.28	858.31	1.23	831.19	1.19
	69687.81	100	69687.81	100	69687.81	100