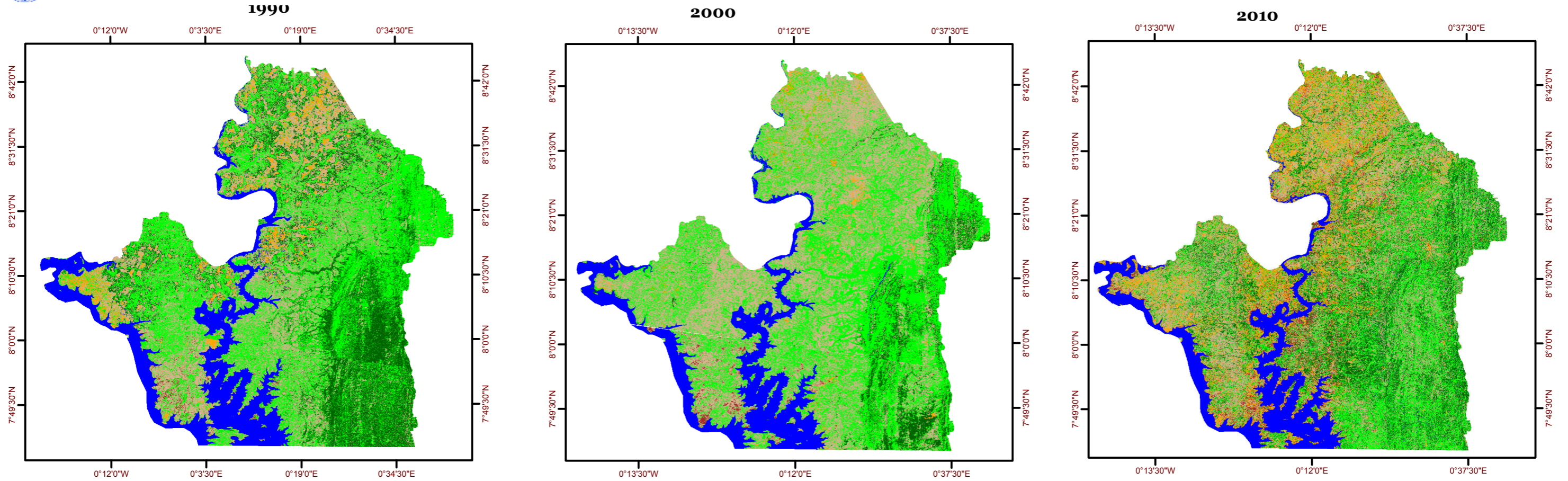


SATELLITE IMAGE MAP OF ENVIRONMENTAL IMPACT, NORTHERN VOLTA REGION, 1990 - 2010

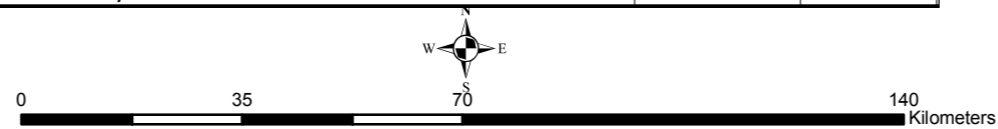
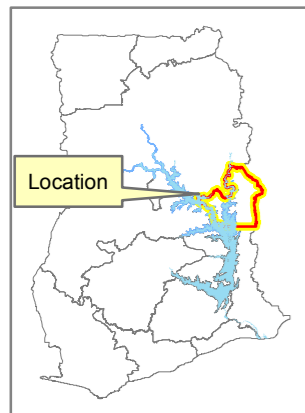


| Class | Ha | Sq Km |
|---|-----------|-----------|
| Closed savanna wood/very dense herbaceous cover | 147602 | 1476.02 |
| Open savanna woodland dense herbaceous cover | 292350.9 | 2923.509 |
| Dense herbaceous/grass cover | 216344.3 | 2163.443 |
| Grass/herbaceous cover | 26484.58 | 264.8458 |
| Bare surface/built up | 4106.9001 | 41.069001 |
| Water body | 99721.4 | 997.214 |







| Class | Ha | Sq Km |
|---|------------|-----------|
| Closed savanna wood/very dense herbaceous cover | 146998.963 | 1469.9896 |
| Open savanna woodland dense herbaceous cover | 216394.12 | 2163.9412 |
| Dense herbaceous/grass cover | 310840.38 | 3108.4038 |
| Grass/herbaceous cover | 14142.011 | 141.42011 |
| Bare surface/built up | 5619.80034 | 56.198003 |
| Water body | 92615 | 926.15 |

| Class | Ha | Sq Km |
|---|----------|----------|
| Closed savanna wood/very dense herbaceous cover | 139842 | 1398.42 |
| Open savanna woodland dense herbaceous cover | 214948 | 2149.48 |
| Dense herbaceous/grass cover | 222574 | 2225.74 |
| Grass/herbaceous cover | 81419.3 | 924.193 |
| Bare surface/built up | 45040.5 | 540.405 |
| Water body | 82786.32 | 827.8632 |

Location Map



Legend

| | |
|---|---|
|  | Closed savanna woodland/very dense herbaceous cover |
|  | Open savanna woodland dense herbaceous cover |
|  | Dense herbaceous/grass cover |
|  | Grass / herbaceous cover |
|  | Bare surface/ built up |
|  | Water body |

Matrix

| Class value | Project Area in the Volta Region matrix of land cover by class values for the years 1990, 2000 and 2010 | | | | | |
|-------------------------|---|------------|----------------|------------|-------------|------------|
| | 1990 | | 2000 | | 2010 | |
| | Area | % | Area | % | Area | % |
| Closed savanna woodland | 1476.02 | 18.76 | 1469.99 | 18.69 | 1398.42 | 17.78 |
| Open savanna woodland | 2923.51 | 37.17 | 2163.94 | 27.51 | 2149.48 | 27.33 |
| Dense herbaceous/grass | 2163.44 | 27.50 | 3108.40 | 39.52 | 2225.74 | 28.30 |
| Grass/herbaceous | 264.85 | 3.37 | 141.42 | 1.80 | 814.19 | 10.35 |
| Bare surface/built up | 41.07 | 0.52 | 56.20 | 0.71 | 450.41 | 5.73 |
| Water body | 997.21 | 12.68 | 926.15 | 11.77 | 827.86 | 10.52 |
| | 7866.10 | 100 | 7866.10 | 100 | 7866 | 100 |