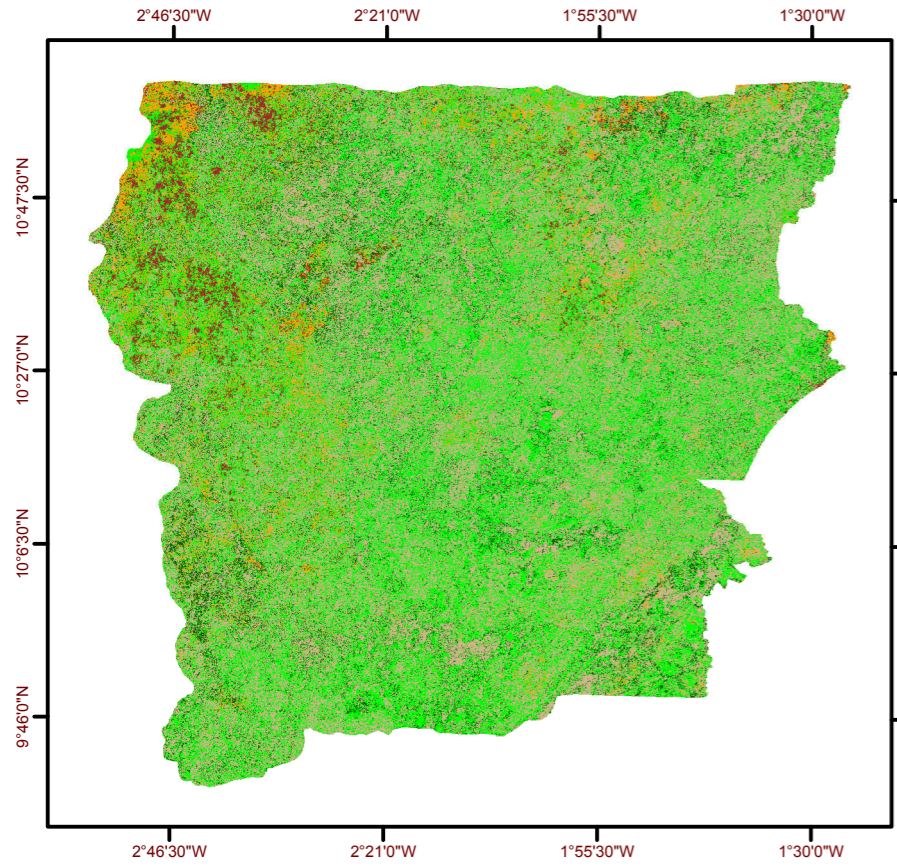


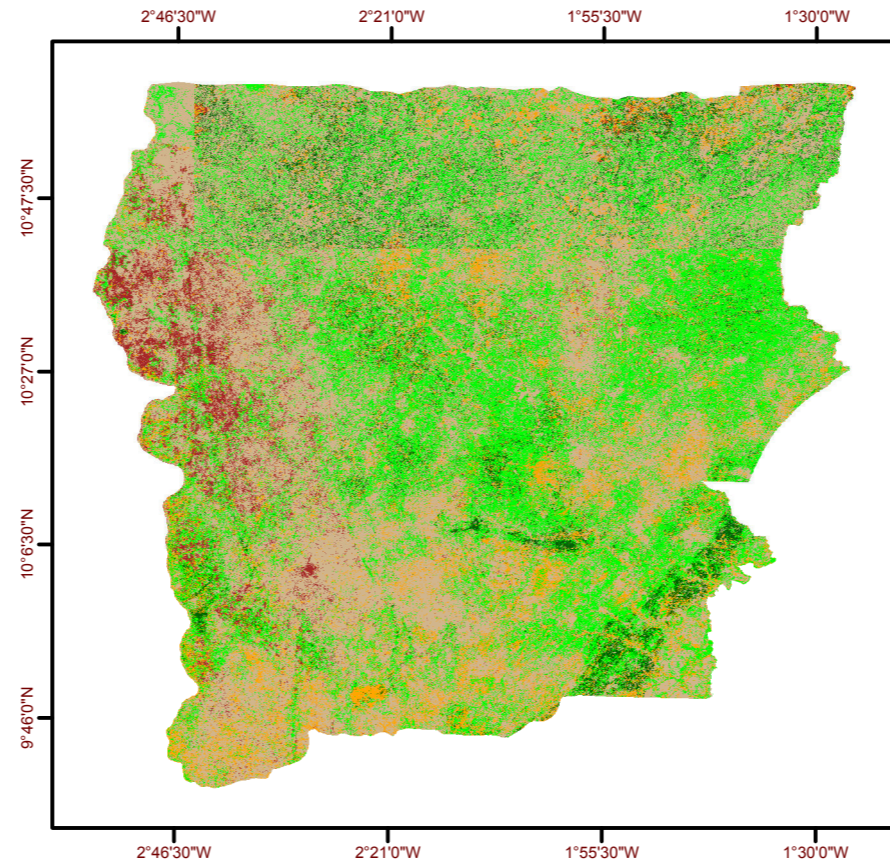
SATELLITE IMAGE MAP OF ENVIRONMENTAL IMPACT, UPPER WEST REGION, 1990 - 2010

1990



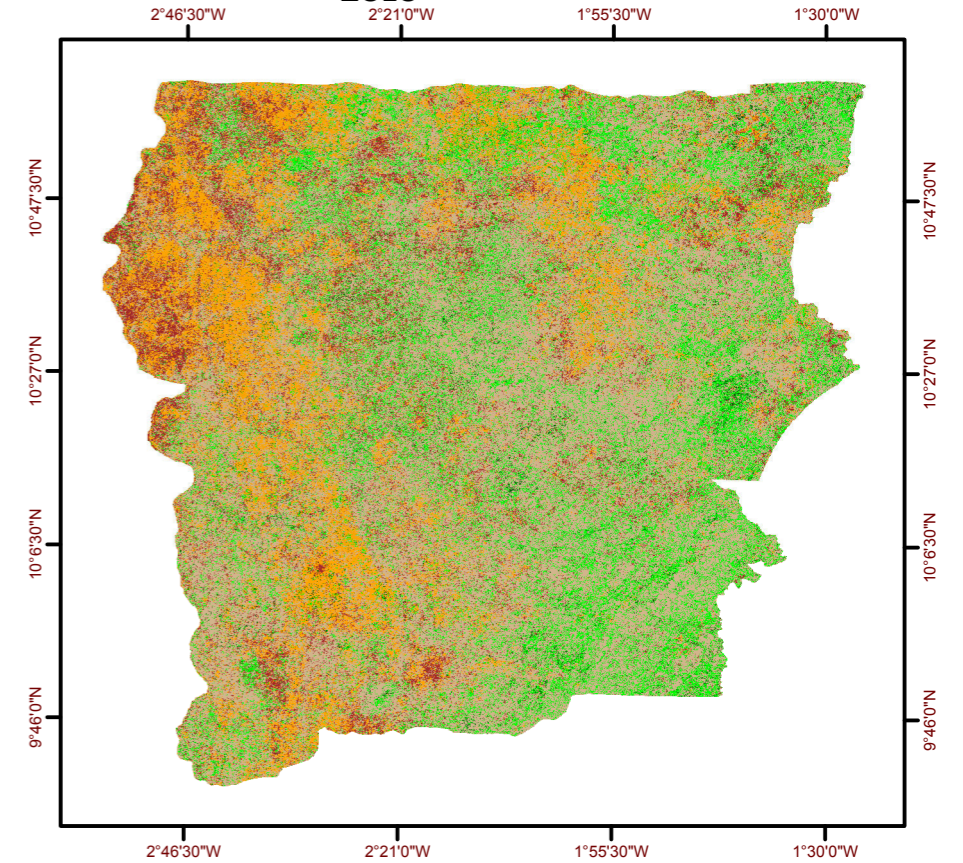
Class	Ha	Sq Km
Closed savanna wood/very dense herbaceous cover	189908	1899.08
Open savanna woodland dense herbaceous cover	771819	7718.19
Dense herbaceous/grass cover	799837	7998.37
Grass/herbaceous cover	115693	1156.93
Bare surface/built up	49751.9	497.519

2000



Class	Ha	Sq Km
Closed savanna wood/very dense herbaceous cover	56591.14	565.9114
Open savanna woodland dense herbaceous cover	511641.9	5116.419
Dense herbaceous/grass cover	1061364	10613.64
Grass/herbaceous cover	223195.1	2231.951
Bare surface/built up	74214.81	742.1481

2010



Class	Ha	Sq Km
Closed savanna wood/very dense herbaceous cover	45208.80	452.088
Open savanna woodland dense herbaceous cover	334069.20	3340.69
Dense herbaceous/grass cover	1029940.00	10299.4
Grass/herbaceous cover	318711.00	3187.11
Bare surface/built up	199078.00	1990.78



Location Map



Legend

- Closed savanna woodland/very dense herbaceous cover
- Open savanna woodland dense herbaceous cover
- Dense herbaceous/grass cover
- Grass / herbaceous cover
- Bare surface/ built up
- Water body

Matrix

Project Area in the Upper West Region matrix of land cover by class values for the years 1990, 2000 and 2010							
Class value	Area of project area in sq.km occupied by a class						
	1990	%	2000	%	2010	%	
Closed savanna woodland	1899.08	9.86	565.91	2.94	452.09	2.35	
Open savanna woodland	7718.19	40.05	5116.42	26.55	3340.69	17.34	
Dense herbaceous/grass	7998.37	41.51	10613.64	55.08	10299.4	53.45	
Grass/herbaceous	1156.93	6.00	2231.95	11.58	3187.11	16.54	
Bare surface/built up	497.52	2.58	742.15	3.85	1990.78	10.33	
	19270.09	100	19270.07	100	19270	100	