



# Introduction to Ghanalinks.org Web Portal (Discussion Topic Five)



Presented at the **USDA Poultry Projects M&E Working Group Meeting held at METSS**

**By:**

**Elfreda N.L. Arthur**

**Knowledge Management Specialist**  
[earthur@metssghana.org](mailto:earthur@metssghana.org)

**Jennifer Asiedu-Dartey**

**GIS Specialist**  
[jasiedudartey@metssghana.org](mailto:jasiedudartey@metssghana.org)

**June 27, 2018**

Implemented through:



# Presentation Outline

---

## 1. Overview of the Ghanalinks.org Portal

- What?/Benefits
- What it offers?
- Accessing the Portal

## 2. Visit to the Portal; walkthrough the key tools/features

---

Implemented through:



**KANSAS STATE**  
**UNIVERSITY**  
Department of Agricultural Economics

---

# Ghanalinks.org portal?

## What?/Benefits

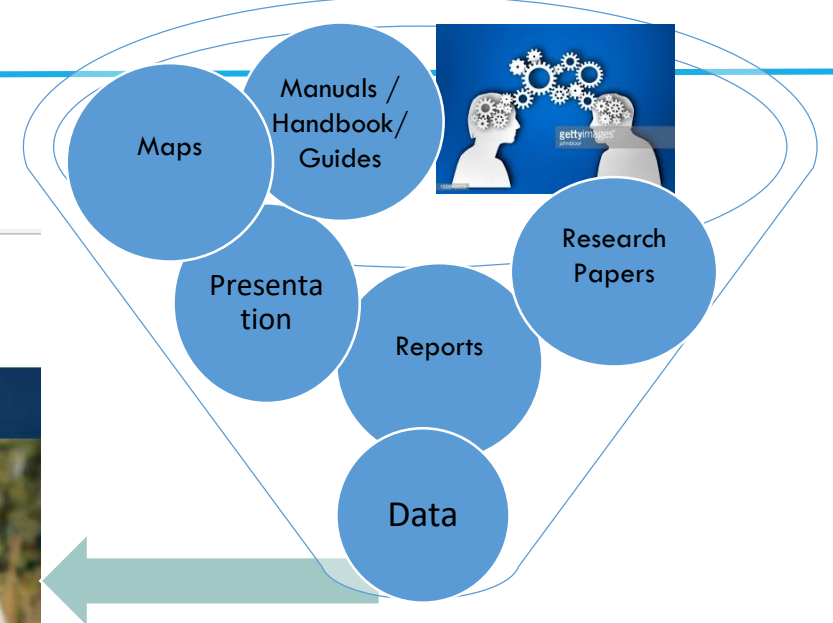
Implemented through:



**KANSAS STATE**  
**UNIVERSITY**  
Department of Agricultural Economics

Ghanalinks.org is an online knowledge management portal that seeks to make data, information and knowledge more accessible for evidence-based decision making.

**Sources Include:** USAID projects, DPs, GoG - MOFA, GSS



**For Evidence-Based Decision making; Effective Knowledge Sharing, Results, Collaboration, Learning; Avoid Duplication**



[www.ghanalinks.org](http://www.ghanalinks.org)

Implemented through:



# Overview – Benefits

## One Stop Repository

**Portal exists beyond projects**

**Share our collective achievements and lessons learned**

**Share the USAID impact story and other Stories via 'Did you Know?'**

**Enhance research - access to data and information/knowledge**

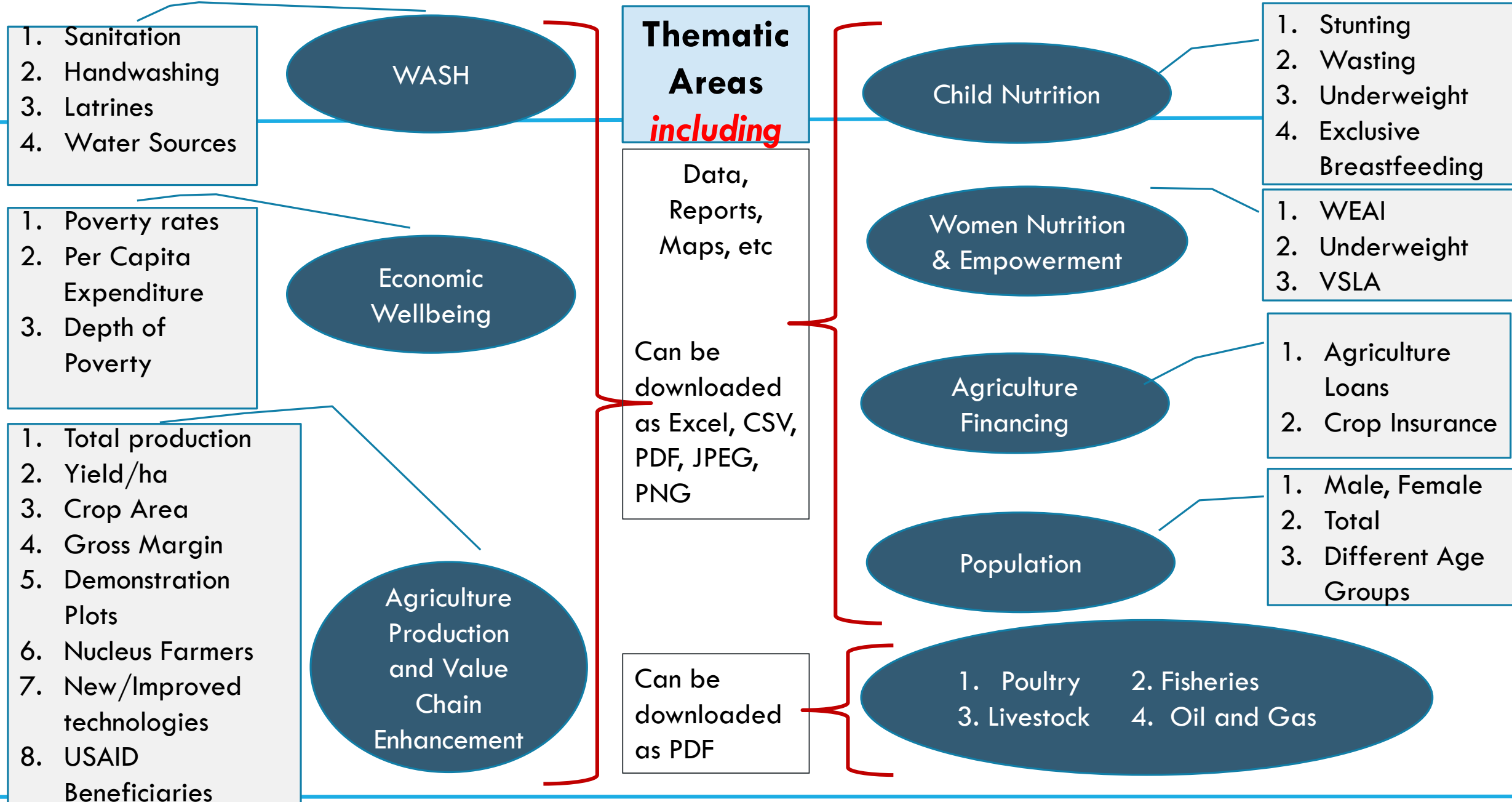
**Enhance user experience with depth of data and information**

**Market the portal to different users**

Implemented through:



**KANSAS STATE**  
**UNIVERSITY**  
Department of Agricultural Economics



Implemented through:



# Overview – What does Ghanalinks.org offer?



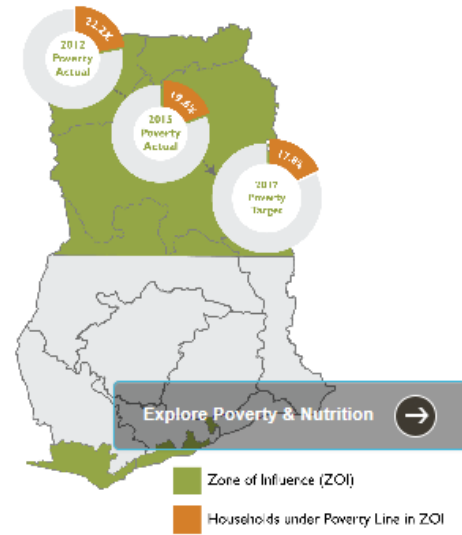
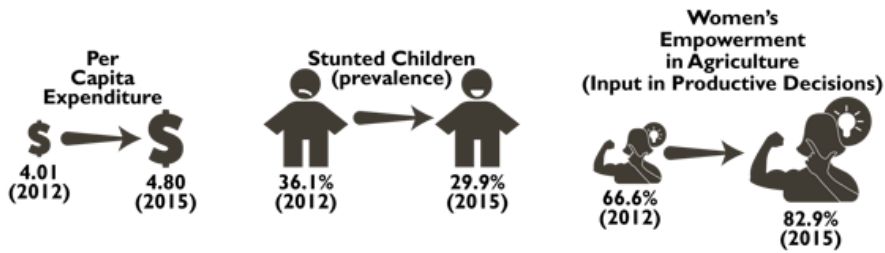
- Welcome
- Analytics
- Where we work
- eLibrary
- Events
- Partners Forum
- Did you know?
- USAID Projects
- Help
- Contact
- Join/Login to Ghanalinks

Home Page

- Links to all pages on the portal
- Infographics on survey data

Ghanalinks.org is an online knowledge management resource that seeks to make data, information and knowledge more accessible for stakeholders in Ghana and elsewhere. Please register and start to Share, Learn and Use all that Ghanalinks.org has to offer.

Click Here to Explore Poverty and Nutrition Results from the 2012 and 2015  
Feed the Future Population-Based Surveys



Explore Poverty & Nutrition

Analytics

Home Page

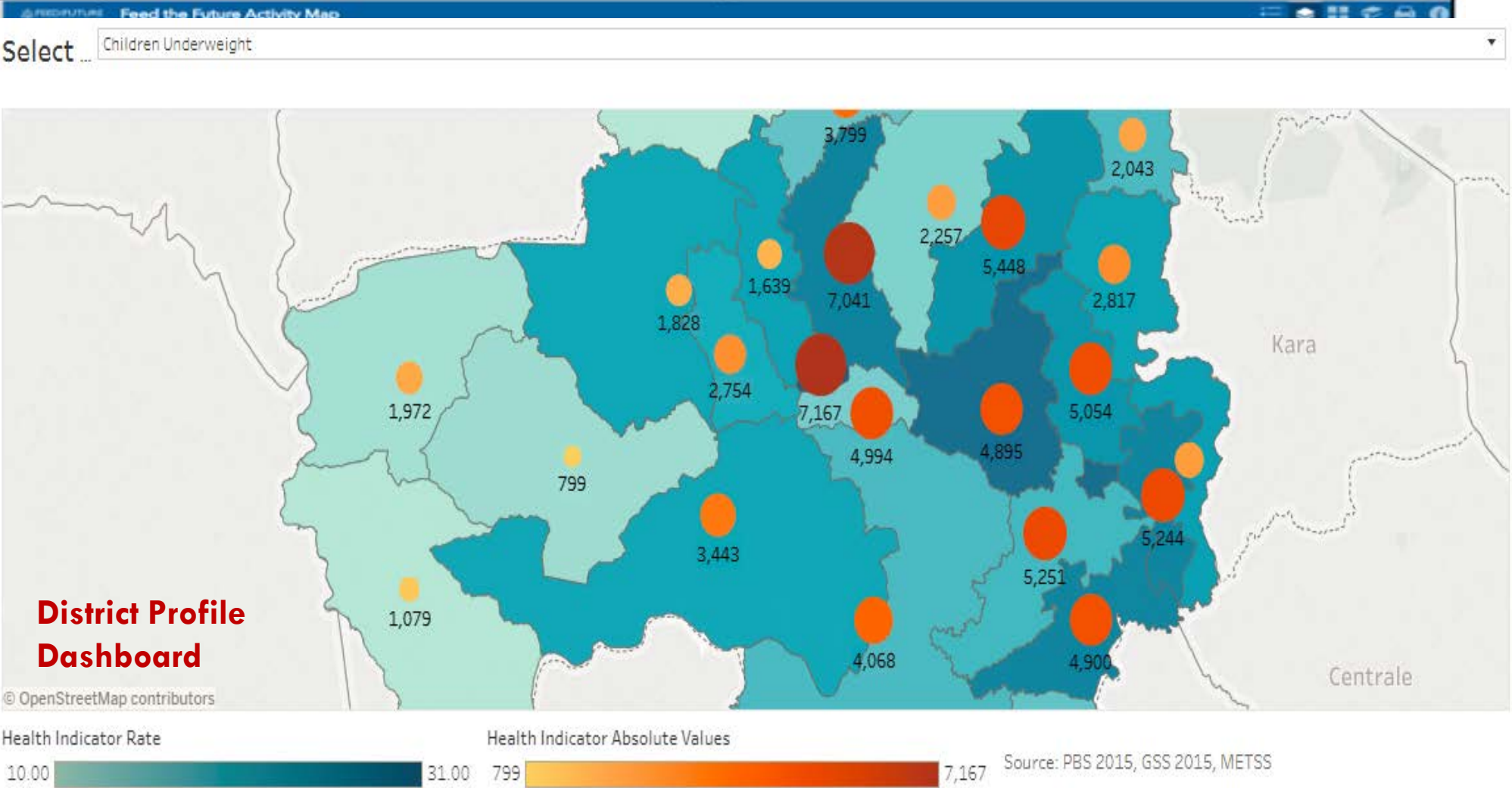
Implemented through:



# Overview – What does Ghanalinks.org offer?

## Datasets

- About than **200 datasets** on poverty, nutrition, population, per capita expenditure, yield, production, gross margin, WASH etc
- Viewed at district, regional, National, ZOI, levels;
- Data year covers, 2008-2018;
- Can be downloaded: tables, maps, charts- CSV, pdf, png/jpg



### District Profile Dashboard

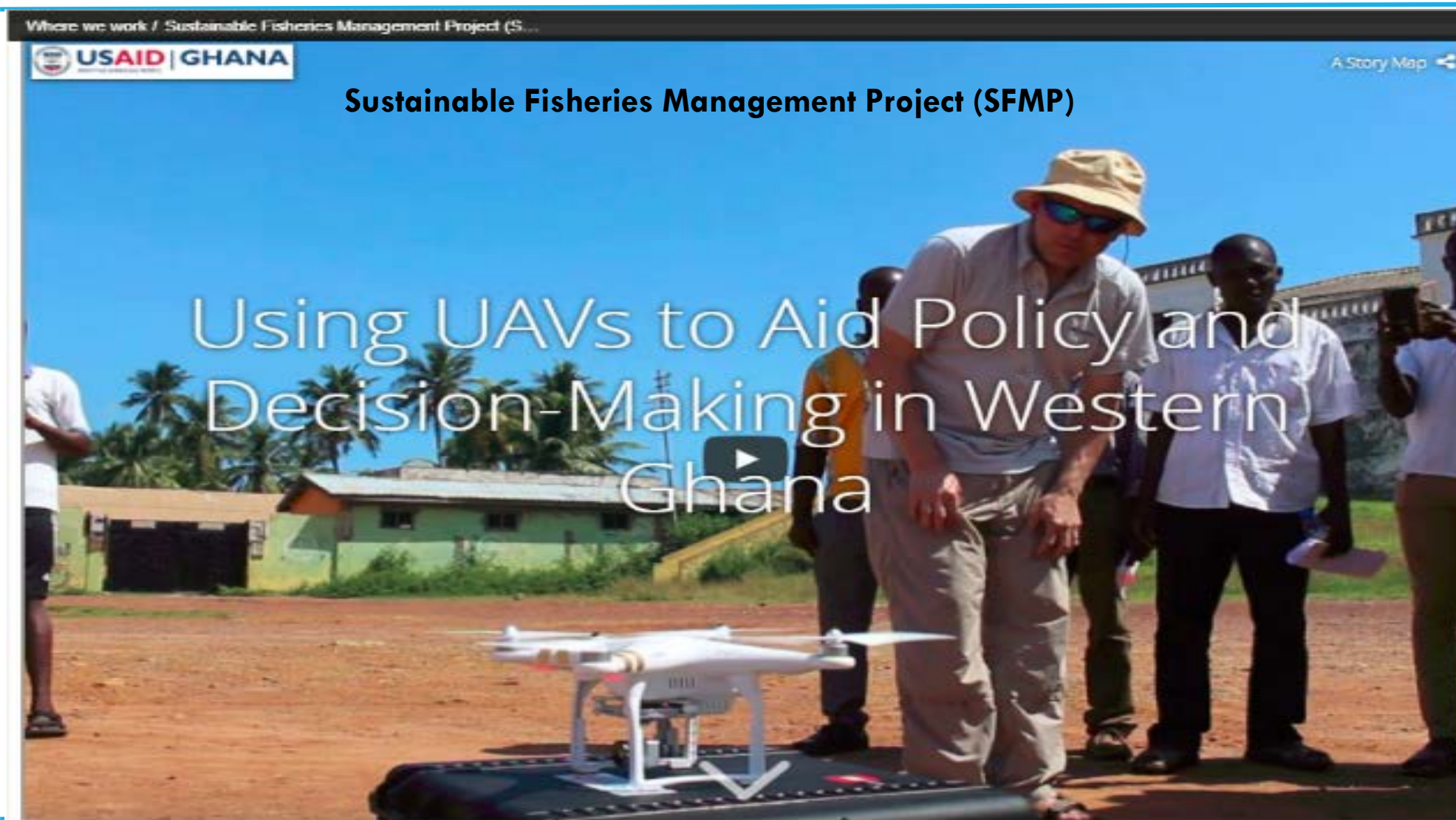
Implemented through:



**KANSAS STATE UNIVERSITY**  
Department of Agricultural Economics



# Overview – What does Ghanalinks.org offer? - Cont'd



## Some USAID IPs Interventions

- Information & Data:
  - Agric infrastructure
  - Health Facilities
  - WASH & nutrition
  - Soil Improvement
  - Target communities & Beneficiaries
  - Fisheries/Environmental research.
- Viewed at district, regional, ZOI
- Data can be downloaded-tables, maps, csv

Implemented through:



**KANSAS STATE UNIVERSITY**  
Department of Agricultural Economics

# Overview – What does Ghanalinks.org offer? – Cont'd

Documents and Media  
eLibrary / eLibrary

- BROWSE BY TYPE
- ↑ Up
  - Basic Document
  - Map
  - Report
  - Manual
  - Presentation
  - Newsletter
  - Audio Recording
  - Strategy
  - Video
  - Brief
  - Paper (includes ...)
  - Booklet
  - Handbook
  - Guide
  - Protocol
  - Infographics

Sort By ▾ Download Selected

Search By ▾

Search Search



## Feed the Future Ghana 2015 - Zone of Influence Interim Assessment Report

Feed the Future monitors its performance in part by periodic assessments of a number of standardized indicators. These indicators reflect data collected through population-based surveys in the geographic areas targeted by Feed the Future interventions, known as the Feed the Future Zones of Influence (ZOI). This document reports the results of the first interim assessment of these indicators in Ghana.

Version: 1.0

Created: 1 Year ago by Elfreda N.L. Arthur

ftf pbs zoi



## Training Report on Woodlot Plantation for Youth

Two day woodlot plantation training was organized for the Youth of Anlo, Krobo and Bosomdo on the 23rd – 24th June 2016. A total of 26 women and 27 men were present. The activity is aimed at helping to preserve the mangrove at Anlo and satellite communities which is being harvested as fuelwood by the youth living along the lagoon. The objectives of the training were to reduce reliance on mangrove as fuelwood, to enable the youth to set up their own plantations and to provide alternate livelihood to the youth in charcoal burning.

Version: 1.0

Created: 8 Months ago by Nikki Long



## Year Two Work Plan, October 1, 2015 to September 30, 2016

The project purpose is to "Rebuild targeted fish stocks through adoption of sustainable practices and exploitation levels." This project will forge a campaign that builds a constituency for change that captures the support of high-level decision makers and politicians as well as grass-roots

## eLibrary

- About 656 reports, presentations, manuals, guides and other resources on poverty, child nutrition and health, poultry, Women Empowerment and nutrition, WASH, Fisheries, , etc
- Downloadable as pdf
- Searchable
- Subscribe to receive any report and other resources

Implemented through:



**KANSAS STATE**  
UNIVERSITY  
Department of Agricultural Economics

# Overview – What does Ghanalinks.org offer? – Cont'd

Partners Forum

Add Category Post New Thread Permissions

RSS Unsubscribe

Categories

Page 1 of 2 — 20 Items per Page Showing 1 - 20 of 21 results.

← First Previous Next Last →

Category	Categories	Threads	Posts	
<b>1. Sharing among USAID Projects &amp; Stakeholders</b> Offers the platform for collaboration among USAID projects and stakeholders.	0	4	11	Actions
<b>2. Feed the Future Ghana District Profiles</b> Discusses the Feed the Future districts profiles for all districts in the USAID Ghana Zone of Influence (ZOI)	0	0	0	Actions
<b>3. Welcome and Self Introduction</b> This category welcomes Users to the Ghanalinks Online Discussion Forum and offers users the opportunity to introduce themselves.	0	7	55	Actions
<b>4. Feedback on the Ghanalinks Knowledge Management Portal</b> Discussions on the Ghanalinks knowledge management portal. <u>Subcategories:</u> Helping to Improve the Ghanalinks portal, Testing First Post	2	2	15	Actions
<b>5. Test your knowledge on the Ghanalinks.org tools</b> This is to encourage users share any learning as they test their knowledge on the various Ghanalinks.org tools. <u>Subcategories:</u> Feed the Future Activity Map and E-library	1	1	3	Actions

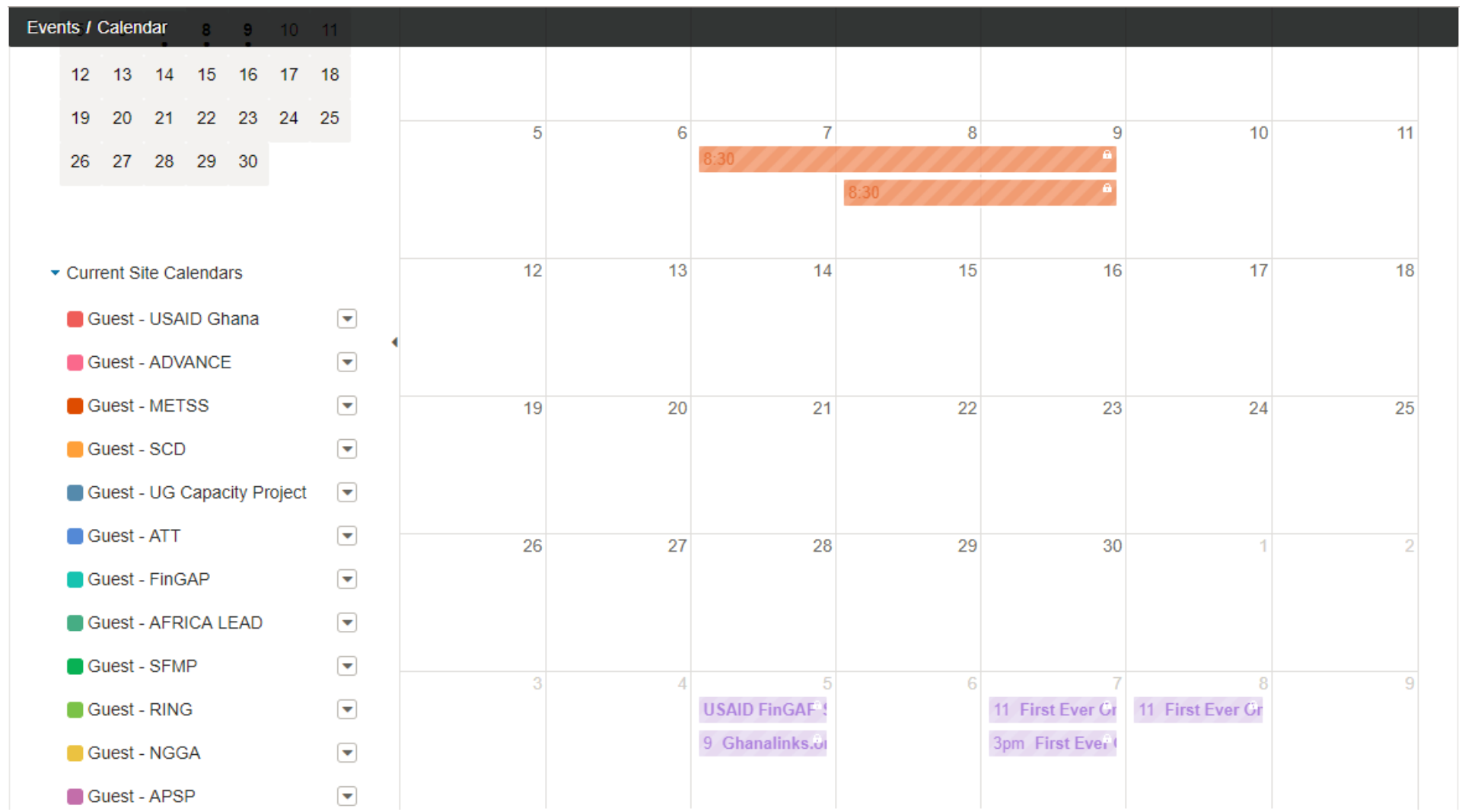
## Forum

- The Ghanalinks.org partners forum seeks to provide users with the platform to collaborate effectively whilst sharing knowledge and learning

Implemented through:



# Overview – What does Ghanalinks.org offer? – Cont'd



## Calendar

- This tool aims to support better coordination of events & activities associated with USG Assistance in Ghana.
- Public and restricted views

Implemented through:



# Overview – What does Ghanalinks.org offer? – Cont'd

This page is still under construction!  
USAID Projects

**METSS**  
Monitoring, Evaluation and Technical Support Services

SUSTAINABLE FISHERIES  
MANAGEMENT PROJECT (SFMP)

Agricultural Development and Value Chain  
Enhancement (ADVANCE) Project

Northern Ghana Governance Activity  
(NGGA)

AGRICULTURE POLICY  
SUPPORT PROJECT (APSP)

**SPRING**  
Strengthening Partnerships, Results  
and Innovations in Nutrition Globally

Agriculture and Natural Resources  
Management Project  
(AgNRM)

Agriculture Technology  
Transfer Project (ATT)

FINANCING GHANAIAN  
AGRICULTURE PROJECT (FinGAP)

GHANA SUPPLY CHAIN  
DEVELOPMENT PROGRAM (SCD)

**USAID projects  
page**

Provides a quick reference to USAID projects and resources

**Still under construction**

Implemented through:



# Overview – What does Ghanalinks.org offer? – Cont'd

## Did you know?

5. 2.1 million poultry birds were consumed in 2015. Source: [Structure of Ghana's Chicken Industry in 2015', 2016](#)
6. Brong-Ahafo is the biggest producer of poultry birds in Ghana and accounted for one-third of the total birds in 2015. Source: [Structure of Ghana's Chicken Industry in 2015', 2016](#)
7. More than 86.6 percent of Ghana's broiler chicken industry are small farms, with an annual production in 2015 of less than 2,000 birds. Source: [Structure of Ghana's Chicken Industry in 2015', 2016](#)
8. The total revenue generated by the broiler industry in 2015 was estimated at GHS 53.6 million. Source: [Structure of Ghana's Chicken Industry in 2015', 2016](#)
9. The Broiler industry's total gross margin in 2015 was estimated at about GHS 16.4 million, with an average total gross margin per farm of about GHS 13,535. Source: [Structure of Ghana's Chicken Industry in 2015', 2016](#)
10. Feed costs accounts for almost 75 percent of total variable costs in broiler chicken farms in Ghana. Source: [Structure of Ghana's Chicken Industry in 2015', 2016](#)
11. There are 2,889 chicken egg farms in Ghana. Source: [Structure of Ghana's Chicken Industry in 2015', 2016](#)
12. On the average each chicken egg farm in Ghana produced 16,700 crates in 2015. Source: [Structure of Ghana's Chicken Industry in 2015', 2016](#)
13. Ghana's chicken egg production is concentrated in Ashanti and Brong Ahafo, with those two regions accounting for more than 76 percent of the total egg output in 2015. Source: [Structure of Ghana's Chicken Industry in 2015', 2016](#)
14. There is no processor channel in Ghana's chicken industry. Source: [Structure of Ghana's Chicken Industry in 2015', 2016](#)
15. Only about 13 percent of managers in Ghana's commercial chicken industry are females. Source: Source: [Structure of Ghana's Chicken Industry in 2015', 2016](#)
16. 95 percent of small pelagics (type of fish) are consumed directly by humans and about 5 percent goes to poultry feed and fish meal. Source: [Sardinella and other small pelagics value and supply chain of the fishery sector, Ghana', 2015](#)
17. Female farmers tend to have about half the size of agricultural land available to their male counterparts in the Forest, Guinea Savannah and Transitional zones. Source: [Baseline Survey on Gender and Agriculture of Selected Communities in Ghana', 2014](#)
18. A higher percentage of households where members include female adult(s), but no male adults exhibit higher association with severe hunger than other households. Source:// [Feed the Future Ghana 2015 Zone of Influence Assessment Report', 2016](#)
19. 19.6% of households in the Zone of Influence lived below the \$1.25 poverty threshold in 2015. Source: [Feed the Future Ghana 2015 Zone of Influence Assessment Report', 2016](#)

## Did you Know?

Extracted from various research papers, reports and other resources in the eLibrary for quick access.

Implemented through:



**KANSAS STATE**  
**UNIVERSITY**  
Department of Agricultural Economics

# Overview – What does Ghanalinks.org offer? – Cont'd



Welcome Analytics Where we work eLibrary Events Partners Forum Did you know? USAID Projects Help Contact [Join/Login to Ghanalinks](#)

- Getting Started
- Ghanalinks.org Database User Guide.
- District Profile Dashboard User Guide
- Poverty and Nutrition Dashboard User Guide
- Feed the Future Activity Map User Guide
- Electronic Library User Guide
- Site Map

Advancing big ideas and climate-smart agriculture through research and innovation

## Help and Contact

- Help provides guidance for users.
- User guides and tutorial videos
- Users can contact the METSS team at [ghanalinks@metssghana.org](mailto:ghanalinks@metssghana.org)

Implemented through:



**KANSAS STATE UNIVERSITY**  
Department of Agricultural Economics

# Accessing Ghanalinks.org : Users accessing Portal

## Ghanalinks.org Users Since May 2016



Comprise: USAID , USAID IPs, DPs, GoG, NGOs, Private Sectors, Tertiary Institutions – Students and other stakeholders

**84,446** page views;  
**53,685** Unique views

**600+** Registered Users  
**5,600+** General Users  
(*Including Registered Users*)

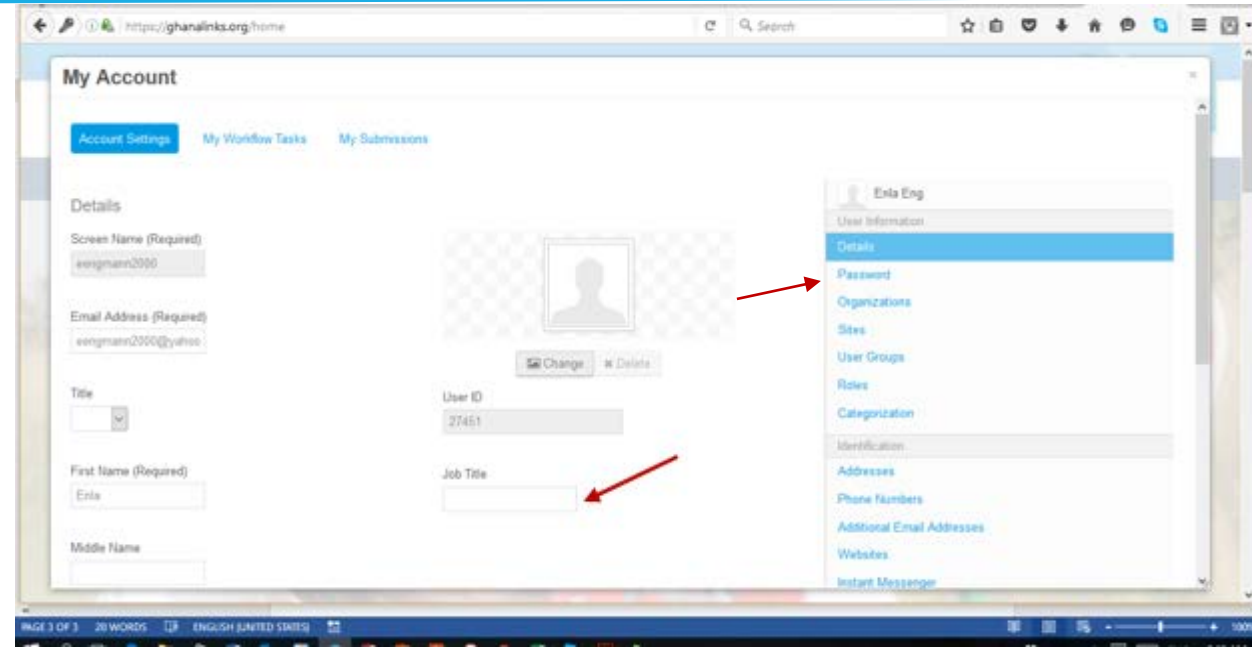
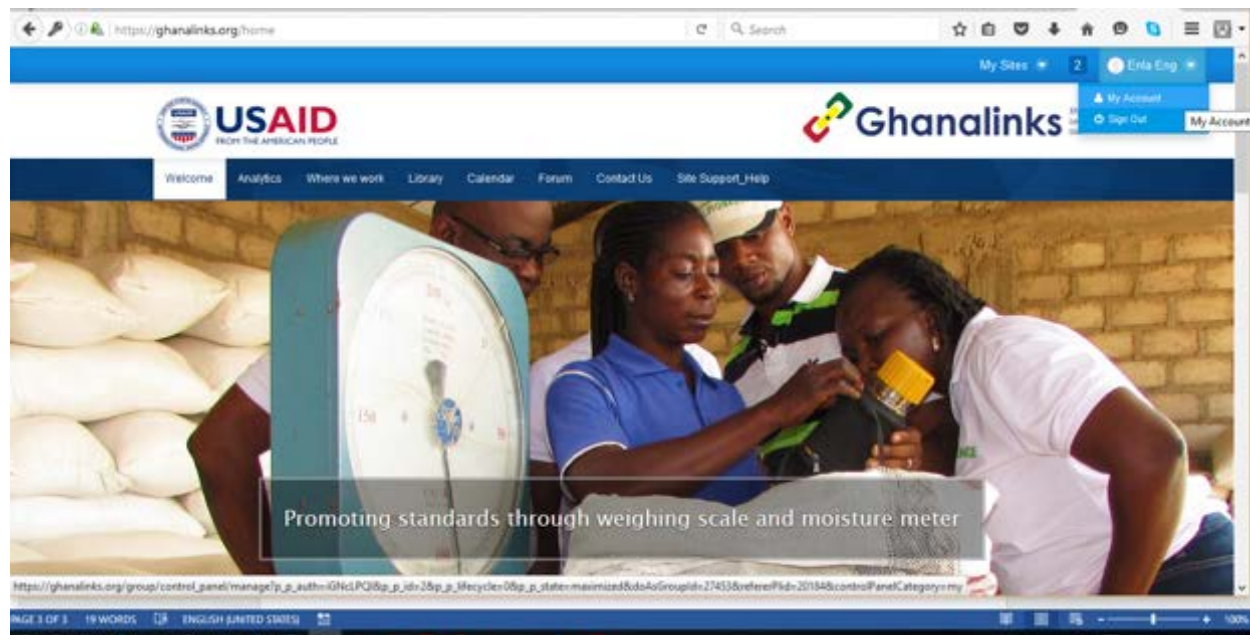
Implemented through:



**KANSAS STATE**  
**UNIVERSITY**  
Department of Agricultural Economics



# Accessing Ghanalinks.org : Access & Registration



- Register at <http://www.Ghanalinks.org>
- Await approval email and log-in
- You can use all aspects without logging-in except *the forum and some Calendar events.*

## **Edit Account details**

Edit password and job detail

Forgot Password if forgotten— Reset

Implemented through:



**KANSAS STATE**  
UNIVERSITY  
Department of Agricultural Economics

Visit to the Ghanalinks.org Portal: [www.ghanalinks.org](http://www.ghanalinks.org)



Implemented through:



**KANSAS STATE**  
**UNIVERSITY**  
Department of Agricultural Economics



Implemented through:

